

Genetic Counselors (GCs) are board-certified healthcare professionals with graduate-level training in genetics who help patients and their healthcare providers understand medically important genetic information in many areas of healthcare.



- >30,000 Texans benefit from the services of a genetic counselor each year.
- 1 in 2 cases of intellectual disability has a genetic basis.
- 1 in 9 pediatric hospital admissions is a child with a genetic disorder.
- 1 in 10 cancers is due to a hereditary predisposition.
- 1 in 10 cases of chronic disease has a genetic component.

GENETIC COUNSELOR LICENSURE WILL:

Genetic testing should be used responsibly and appropriately to help patients by trained experts

Genetic testing can save lives through tailored medical care and therapeutic options. Misusing genetic test results can lead to unnecessary & expensive surgeries or therapies, resulting in devastating physical, emotional and/or financial harm to patients. Ordering unnecessary testing can waste thousands of healthcare dollars.

Studies show:

- >30% of non-genetics medical providers misinterpret results of genetic tests.
- >\$60,000 can be saved by institutions per month by involving a GC in the genetic testing process.
- >\$4 billion can be saved over 10 years by improving payor access to genetic counseling.

Texas has sub-optimal access to genetics services

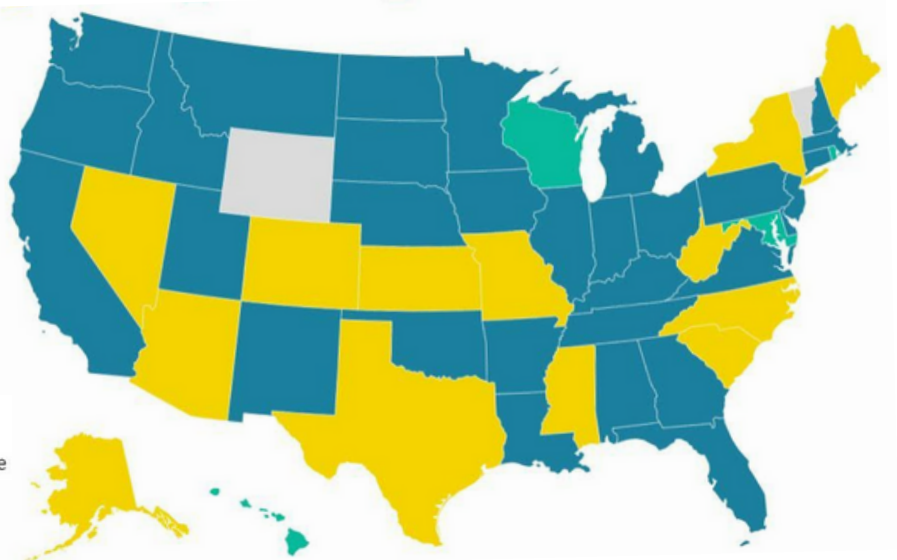
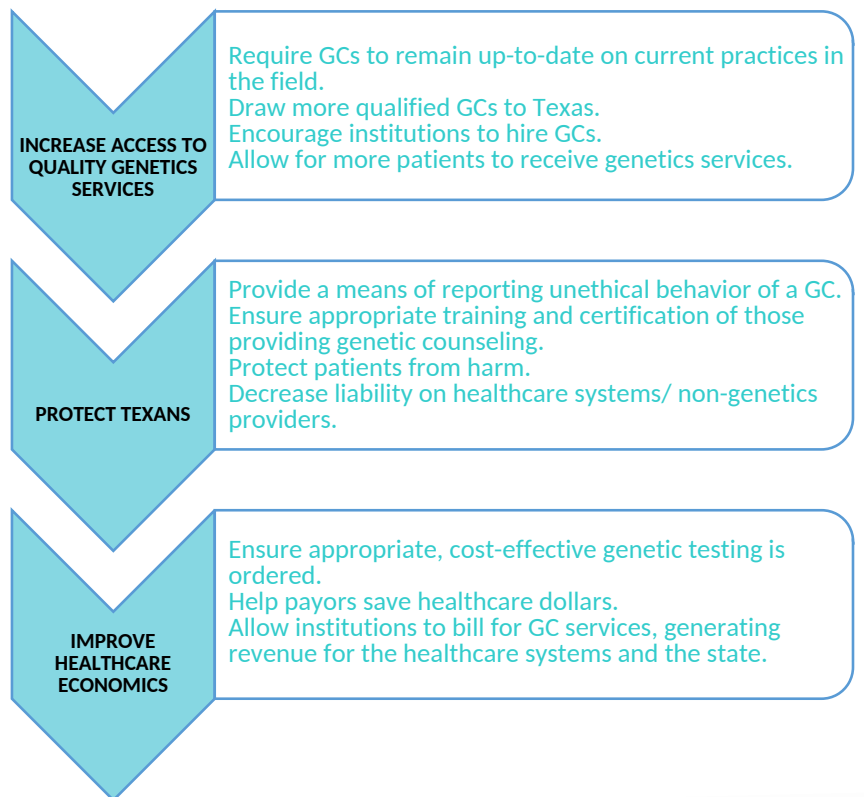
Currently, there is a shortage of GCs in Texas, leading to suboptimal access to genetics services. Without licensure, most GCs in Texas cannot be credentialed by their employer, and require physician supervision, which further restricts access to genetic counseling services.

Texas currently has no enforceable standards for the practice or training of genetic counselors

- 35 states currently issue genetic counselor licenses or have passed legislation for genetic counselor licenses.
- 13 additional states have proposed legislation.

State Licensure Map

States in Progress States in Rulemaking States with Licensure



Citations:

Brierley K, et al. Adverse Events in Cancer Genetic Testing. *Cancer J* 2012;18(4), 303-9. Bonadies, DC, et al. Adverse events in cancer genetic testing: the third case series. *Cancer J*. 2014; 20(4), 246-53.

DaVanzo J, et al. "Improving Medicare Beneficiaries' Access to Genetic Counseling: Recognizing the Role of Genetic Counselors." June 2013.

Dickerson, JA, et al. Improving the value of costly genetic reference laboratory testing with active utilization management. *Arch Pathol Lab Med* 2014; 138(1), 110-3.

Emery, AE, & Rimoin, DL (1992). *Principles and practice of medical genetics*. Edinburgh: Churchill Livingstone.

Giardiello, FM, et al. The use of interpretation of commercial APC gene testing for familial adenomatous polyposis. *NEJM*. 1997; 336(12), 823-7.

Hickner, J, et al. Primary care physicians' challenges in ordering clinical laboratory tests and interpreting results. *J Am Board Fam Med*. 2014; 27(2), 268-74.

Hoskovec, JM, et al. Projecting the Supply and Demand for Certified Genetic Counselors: A Workforce Study. *J Genet Couns* 2017; 27(1), 16-20

Korngiebel, DM, et al. Patient safety in genomic medicine: an exploratory study. *Genet Med*. 2016; 18(11), 1136-1142.

Kotzer, KE, et al. Genetic testing utilization and the role of the laboratory genetic counselor. *Clin Chim Acta*. 2014; 427, 193-5. 2016; 146(2), 221-6.

Lindor RA, Marchant GE. A review of medical malpractice claims related to clinical genetic testing [abstract]. In: *J Clin Oncol*; 2011 Jun 3-7; Chicago, IL. ASCO; Abstract nr6073

Mainous, AG 3rd, et al. Academic family physicians' perception of genetic testing and integration into practice: a CERA study. *Fam Med* 2013; 45(4), 257-62.

Mathias, PC, et al. Preventing Genetic Testing Order Errors With a Laboratory Utilization Management Program. *Am J Clin Pathol*.

Miller, CE, et al. Genetic counselor review of genetic test order in a reference laboratory reduces unnecessary testing. *Am J Med Genet A*. 2014; 164A(5), 1094-101.

Plon SE, et al. Genetic testing and cancer risk management recommendations by physicians for at-risk relatives. *Genet Med*. 2011;13(2), 148-54; 12

Riley, JD, et al. Improving Molecular Genetic Test Utilization through Order Restriction, Test Review, and Guidance. *J Mol Diagnostics* 2015; 17(3), 225-9.

Rutherford, S, et al. Medical management adherence as an outcome of genetic counseling in a pediatric setting. *Genet Med* 2014; 16(2), 157-63.

Scriber, CR, et al. The frequency of genetic disease and congenital malformation among patients in a paediatric hospital. *Can Med Assoc J* 1973;108(9), 1111-5

Schneider, KA. (2012) *Counseling about Cancer: Strategies for Genetic Counselors* (3rd ed.). Hoboken, NJ: Wiley-Blackwell

Survey of 90/111 TSGC members 2013

Weatherall, DJ (1991). *The New genetics and clinical practice*. Oxford University Press