

COVID-19 Panel: Student Perspective

Abby Yesso & Katie Shields



Introduction

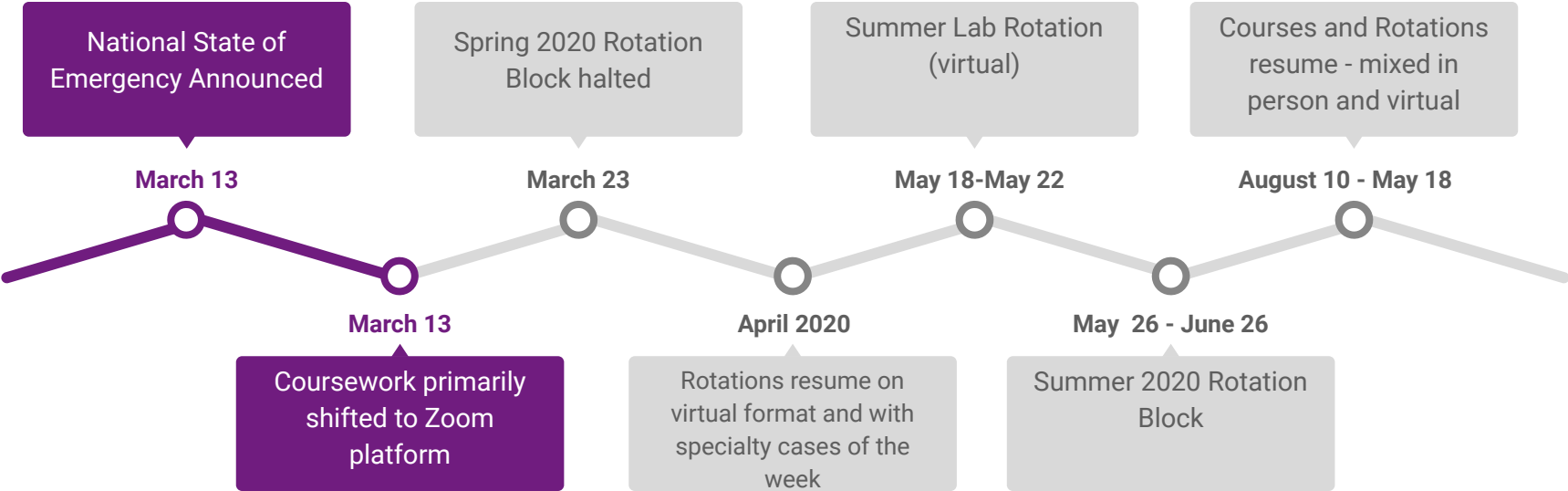


Bonus fun fact: I'm from the town where they film the show *Swamp People*

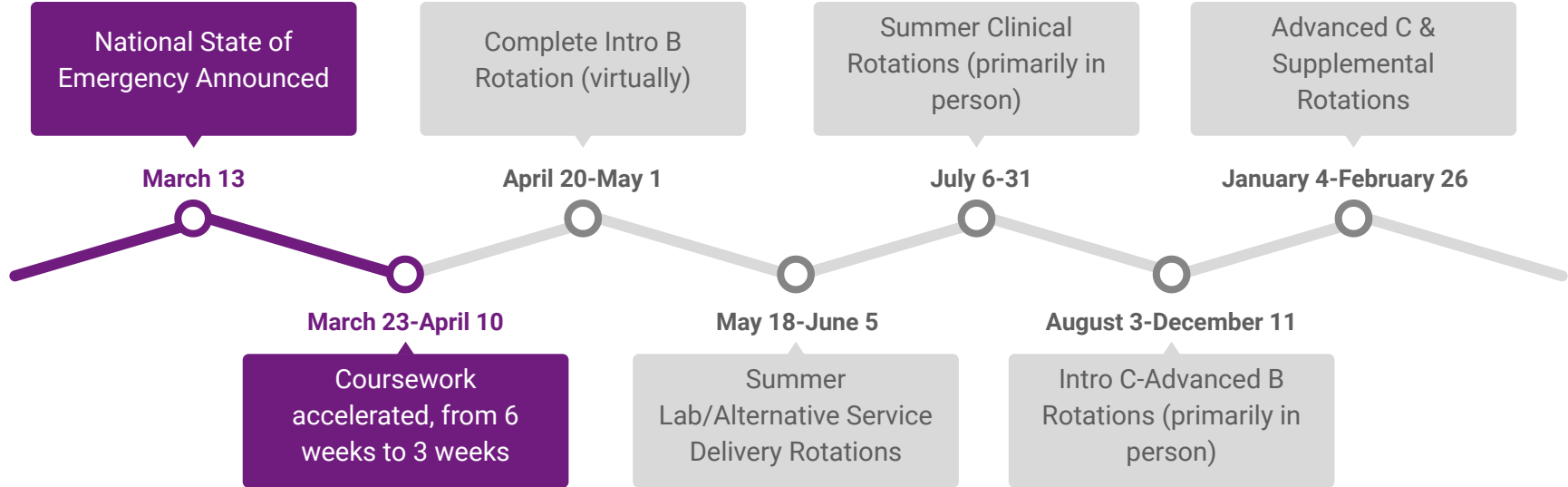


Bonus fun fact: The first and only time I have camped in the snow was here in TX.

BCMGCP Timeline



UTGCP COVID Timeline



Impact on coursework



How did classes change?

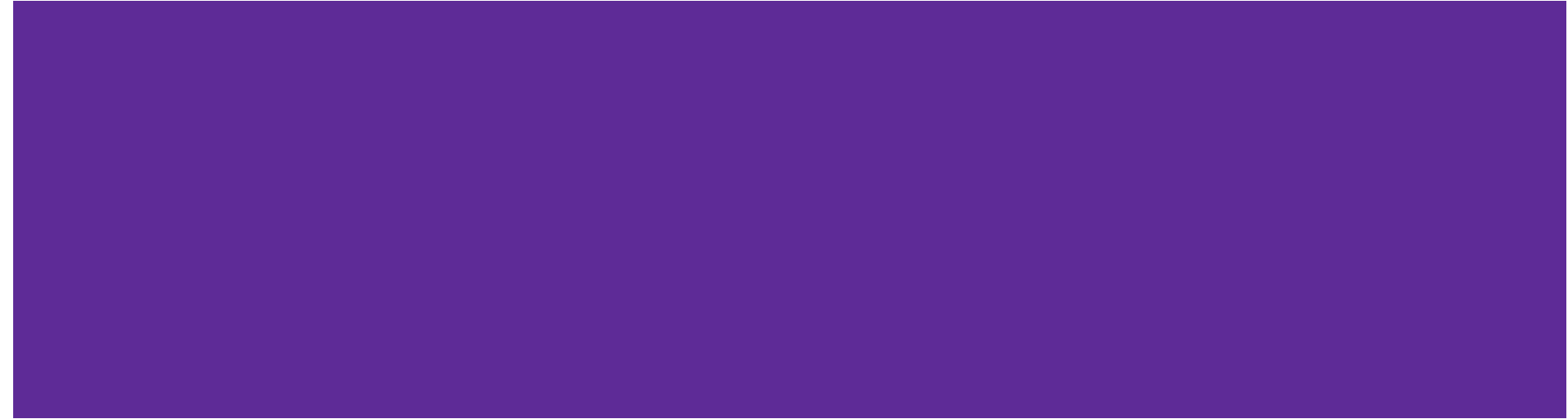
BCMGCP Coursework

- Classes moved online, with lectures through Zoom and exams on Exemplify
- Course that involved roleplays or simulated patient interactions were particularly challenging
- Breakout rooms allowed for activities and small group discussions

UTGCP Coursework

- Classes moved online, with lectures through WebEx and exams on Canvas
- Many classes have worked well virtually, but classes with heavy emphasis on discussion/psychosocial skills are more challenging

Impact on rotations



Cases by the numbers...

Abby's Cases

- Of 243 cases, approximately 50% were telemedicine encounters.
- At least half of cases entered under each specialty (prenatal, cancer, pediatric) were conducted in person

Katie's Cases

- Of 249 cases, roughly 40% were not performed face to face.
- Cancer was the rotation that was most significantly impacted, with only 3 of 85 cases in person

Benefits & Challenges of Virtual Rotations

Benefits

- Lots of practice with alternative service delivery models
- Students able to get a sense of whether or not remote counseling is a good fit for them before entering the workforce
- Valuable opportunity to practice adaptability and developing new strategies for communicating with patients
- PJ bottoms and no commuting

Challenges

- No non-verbal communication cues, more complicated to share visual aids, the typical challenges that come with remote counseling
- Not being in the room with the patient and supervisor at times made it difficult to remain present and really engage as we learned
- Challenging to shift patient perception of appointment when conducted over telemedicine
- Unable to complete key tasks, such as physical exam, for some cases

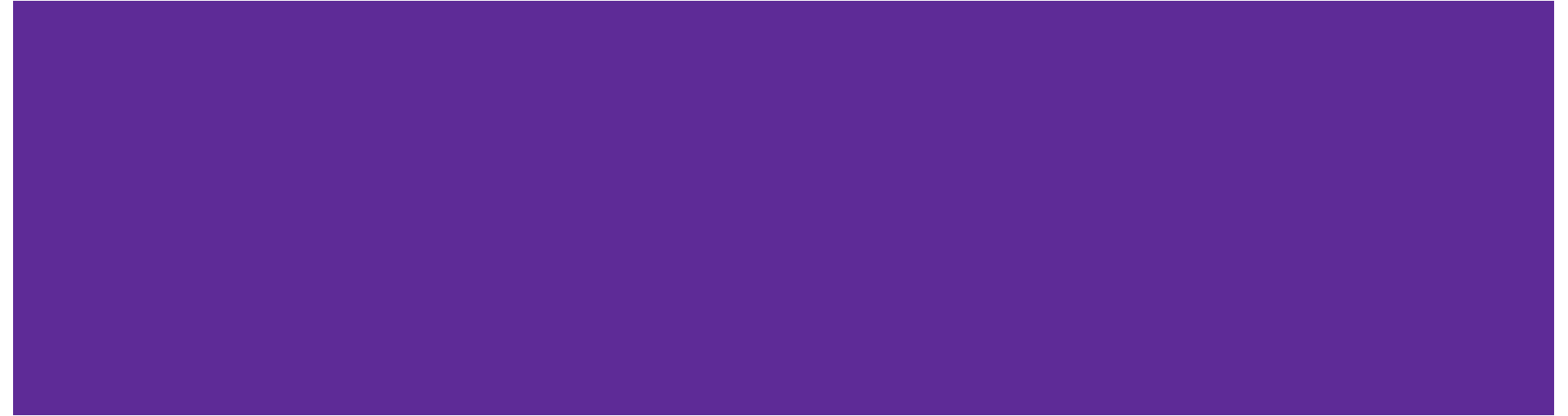
Impact on Students' Social & Mental Health



Social/Mental Health Impacts

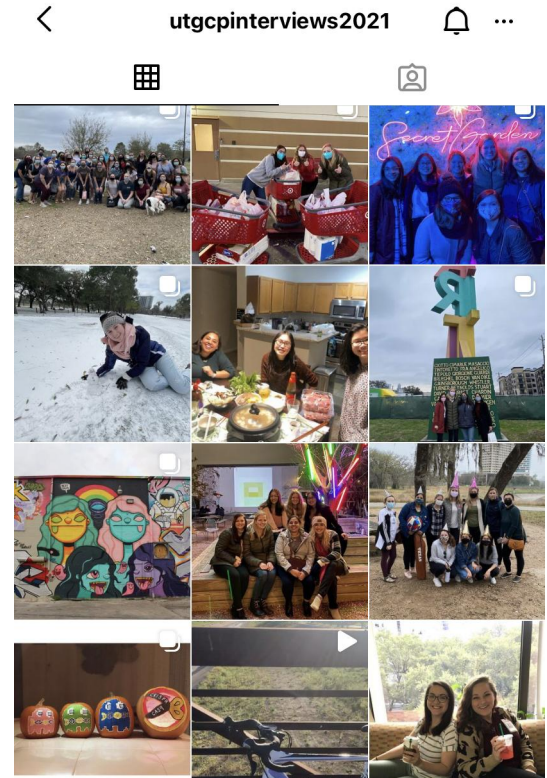
- Meetings with program leadership to check to address social impacts of quarantine and Covid-related isolation
- Frequent check-ins, game nights, social video calls with classmates to build sense of community in isolation
- Transitioned class gatherings (mentor-mentee events, class meetings, etc.) to Covid-friendly formats, such as outdoor spaces with social distances and virtual platforms

Impact on recruitment

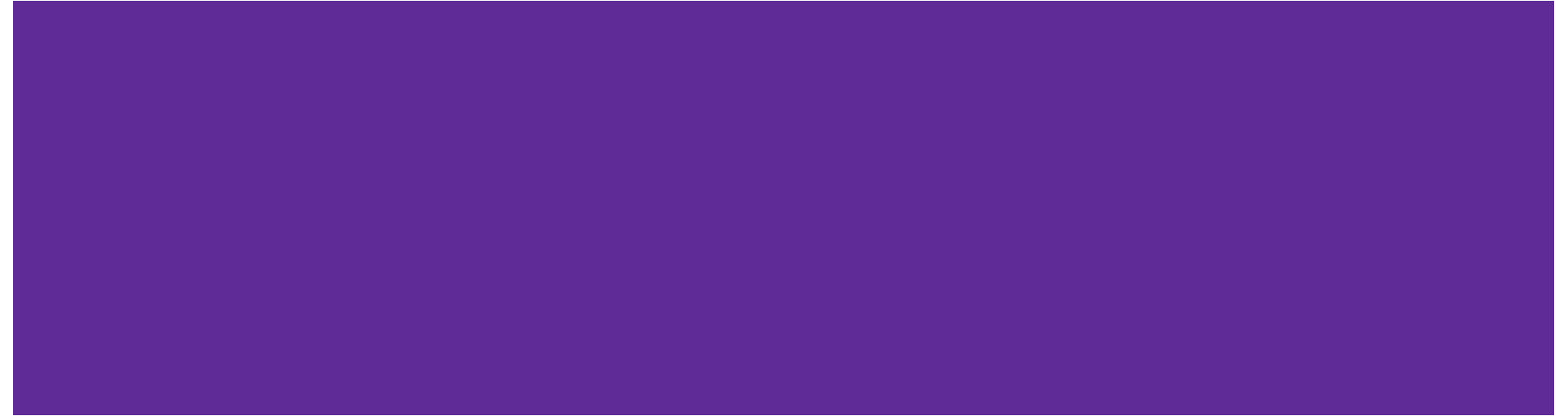


Interviews and Pre-Interview Activities

- All activities shifted to a virtual format, including interviews, interview dinners, informational webinars
- Virtual format removed financial and geographic barriers for many individuals
- Difficulties showcasing Houston and facilities students would have access to in a virtual format



Impact on job opportunities



Interviews and job opportunities

- Primarily conducted virtually
- Number of positions available impacted by availability of funding and resources
- Reduced financial strain and issues coordinating in person interviews
- In general, students obtained employment at least **6 weeks** prior to graduation
- Some opportunities were not posted within the hiring time frame for new graduates due to issues with funding and resource allocation

Summary



- Overall, shifting coursework and clinical rotations to a virtual platform allowed for development of diverse skill sets and did not significantly impact students readiness or ability to enter the workforce
- Interviews and recruitment process were overall successful and were not significantly impacted
- The pandemic highlighted the importance for awareness of social and mental health stressors students experience outside of their program-related responsibilities

Questions?

